

# The Lion's Tale

The Official Newsletter of the Central Maryland Penn State Alumni Chapter

2009 & 2011 Chapter of **DISTINCTION** | 2010 **MEMBERSHIP** Award



January 2012

## President's Message



It has truly been a dark period in Penn State's history, one that we never anticipated. But from this darkness we have seen a resurgent belief in the strength of PSU as a wonderful institution that has developed so many quality people.

We are constantly reminded about the strength of our alumni through the growth of our Chapter over these last 4 years. We are up to an all-time high of 146 members and are continuing to expand and solidify our offerings of events, including a growing number of community service opportunities.

We also recognize the continued vitality of Penn State from the new students from our area that are now attending the University, with a record 26 incoming freshmen and 95 people overall attending this year's Freshmen Send-off.

Please check our website regularly so that you can join us at one of our many upcoming events to celebrate all that is good about our school and each other.

**WE ARE . . . STILL . . . PENN STATE!!!**

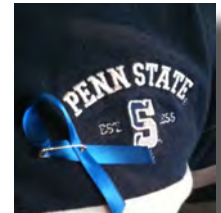
Paul Danielson, '90  
President



## In Sadness...

The Paterno Family has asked that rather than flowers or any other acknowledgement of his death.

PLEASE MAKE A DONATION to **SPECIAL OLYMPICS** or **THON!**





## MEMBERSHIP CARDS

Starting in 2012 our membership year will be from July 2012 to June 2013.

We're certainly proud that our membership has grown to over 146 members this year! Let's hit 200!



When you attend a chapter function, membership cards will be provided to all dues-paying members. Future plans for local establishment discounts and other chapter benefits are currently under consideration. As more details are solidified, members will be notified. Be sure to ask for yours when you come to football viewing parties, happy hours, etc...

## HAPPY HOUR SCHEDULE



Every Second Thursday  
of the Month

6:00 - 8:30 PM

- February 9th ..... THON Event
- March 8th ..... Kolby's Smoke House, Maple Lawn
- April 12th ..... Pub Dog, Columbia



### THON: by the Numbers

- 2,300 children lose their battle to cancer everyday
- \$9,563,016.09 raised by THON in 2011
- 15,000 Penn State student volunteers participating annually
- 46 Hour, no-sitting, no-sleeping dance marathon
- 708 dancers
- 9,643 meals served during THON weekend
- 27,816 water bottles consumed
- 7,372 registrants for the 2011 THON 5K
- \$78 million has been raised by THON for The Four Diamonds Fund since partnering in 1977

**Eat at T-Bonz Grille & Pub and Help Fight Pediatric Cancer!**  
February 9, 2012

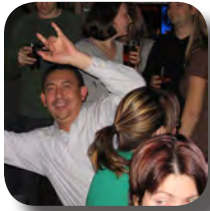
T-Bonz will be donating 15% of their sales ALL day on February 9, 2012 (11am - 10pm) to The Penn State IFC/Panhellenic Dance Marathon (THON). Please present the PSU Central Maryland flyer to your server so they know you're supporting PSU & THON!!

**Download here or from the chapter's website >>**

**T-Bonz Grille & Pub**  
4910 Waterloo Rd  
Ellicott City, MD 21043

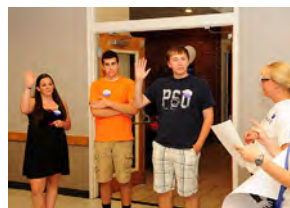
For more information visit:  
[www.thon.org](http://www.thon.org)  
[www.fourdiamondsfund.org](http://www.fourdiamondsfund.org)  
[www.psucentralmd.org](http://www.psucentralmd.org)





August 11, 2011 marked the largest freshman send-off event the chapter hosted in the past four years! 26 incoming freshmen and their families joined the chapter board members, nearly 100 people in total, for an evening freshman send-off celebration. Every year alumni chapter's around the country open their doors to new freshmen, transfer students, and their families to mingle with local Penn State alumni, listen to guest speakers, and meet other students who serve as a familiar face on campus, a possible "ride home," and maybe friendships that mark the new chapter in their lives. Our local PSU DC/MD/VA admissions representative Brett Hoffman, spoke to the group and emphasized the importance of getting involved in organizations and connecting with professors who are eager to have undergraduates assist them in research projects.

For the third year in a row the chapter was grateful that board member, Larry Matz, prepared his infamous BBQ for everyone to enjoy. Students also participated in PSU trivia for prizes. We look forward to next August where the chapter celebrates five years hosting this event!



## FRESHMAN SEND-OFF 2011

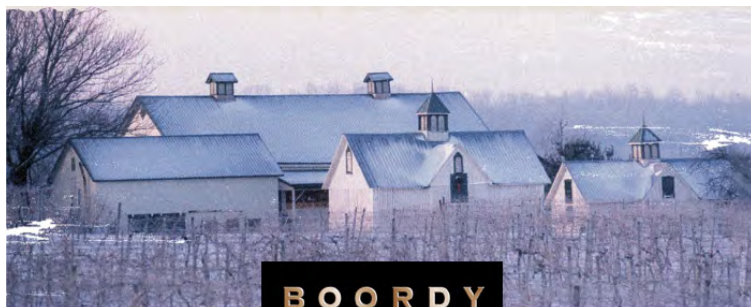




## WINE EVENT - FEB 4TH

### SIP AND SLIDERS AT BOORDY VINEYARDS

Now that college football season has ended, it's time for some fun at Boordy, Vineyards, 12820 Long Green Pike, Hydes, MD 21082. Join us on Saturday, February 4th at 12:30 pm to sip some wine and feast on sliders. Victoria Vox will be playing live music. \$15 per adult will be collected at the door and includes assorted sliders, six wine samples and an engraved Boordy wineglass. For more information, see [www.psucentralmd.org](http://www.psucentralmd.org) or [www.boordy.com](http://www.boordy.com).



**BOORDY**  
VINEYARDS

## CHAPTER T-SHIRTS AVAILABLE

If you would like to purchase a short sleeve Penn State Central Maryland Alumni Chapter t-shirt, they will be available for purchase at most chapter events or you can contact [membership@psucentralmd.org](mailto:membership@psucentralmd.org). Proceeds go toward the chapter's scholarship fund.

**\$15.00**



## HOMECOMING 2011



Many thanks to Ned, Melissa, Kevin, Ben and Mary Catherine Downes, and Mary Catherine's friend, Lindsay Deller who represented the chapter in the 2011 Homecoming parade and in after-parade partying!



If you're planning to head up to Homecoming in 2012, consider joining the chapter members in the 2012 festivities! Let us know!



## FOOTBALL VIEWING 2011



This year's football season was filled with great highs and very difficult lows. Our Chapter would like to thank Sonoma's owner, Jerry Seidel, and his great staff for once again hosting us for each and every game of the 2011 season including the recent Ticket City Bowl Game.

It was an important season to be together with other members of our PSU Family; we cheered together for the wins, lamented the loses, and supported each other in the wake of the scandal that has rocked our school to its core.

Thanks to the over 400 people who came out to Sonoma's this season to enjoy the games and to help us cheer on our Nittany Lions!



## Chapter Marks 4th Year Supporting Toys For Tots

A big “Thank You!” to everyone who came out to Sonoma’s on December 8th or 9th to participate in our 4th Annual Toys for Tots toy drive.



Our Annual Holiday Gathering took place at Sonoma’s on December 8th and Chapter member, Rich Marcinek (PSU ‘88), helped extend the toy drive through December 9th when his band, Saving America, played at Sonoma’s and also collected toys and money for Toys for Tots.



With these combined efforts, our Chapter helped the local Marines collect a grand total of over 3,000 toys to be distributed to very deserving children in our area!



## RECRUITING

Another class has been admitted to Penn State and in a few short months will arrive on campus! That only means the admission process is going to get started again to find the students who will become Penn Staters!

If you’re interested in becoming an admissions volunteer or finding out more information about what admissions volunteers do, visit the [Admissions Office Volunteer Program](#) or email Mike at [relations@psucentralmd.org](mailto:relations@psucentralmd.org)



Link Up...



Be Our Friend...

### BOARD OFFICERS:

- Paul Danielson, President
- Beth Denne, VP – Social
- Ned Brokloff, VP – Membership
- Mike Jozkowski, VP – University Relations
- Carol Apple, Treasurer
- Melissa Frederick, Secretary

### BOARD MEMBERS:

- Mark Boccia
- Sherry & Ken Hibbard
- Angie Kearney
- Larry Levin
- Larry Matz
- Mike Miller
- Denise Petrusic
- Brian Wadsley

### CONTACT US:

- [www.psucentralmd.org](http://www.psucentralmd.org)
- [PSUCentralMD@gmail.com](mailto:PSUCentralMD@gmail.com)
- Newsletter: Mark Boccia